

Model: Stinger-C1 (PS410) / Russian-C1 (PS440)		Date: 28-Sep-01	No.: MA860009
Modified Article: DC Motor		Prepared by: S. Tomoe	
From: Technical Services Dept., GTS Division			
Reason for Modification:	<input type="checkbox"/> Parts catalog correction <input type="checkbox"/> To facilitate assembly <input type="checkbox"/> Part standardization	<input type="checkbox"/> Vendor change <input type="checkbox"/> To improve reliability <input checked="" type="checkbox"/> Other	<input type="checkbox"/> To meet standards (      )

The DC motor has been changed so that the Paper Tray Unit can be installed in the Russian-P2.

Old part number	New part number	Description	Q'ty	Int	Page	Index	Note
AX060184	G5845760	DC Motor – 11.3W	1-1	X/O	11	21	

**Note:** This modification applies to the following models: A860-11, -21, -56.

#### RCL (Japan) Production

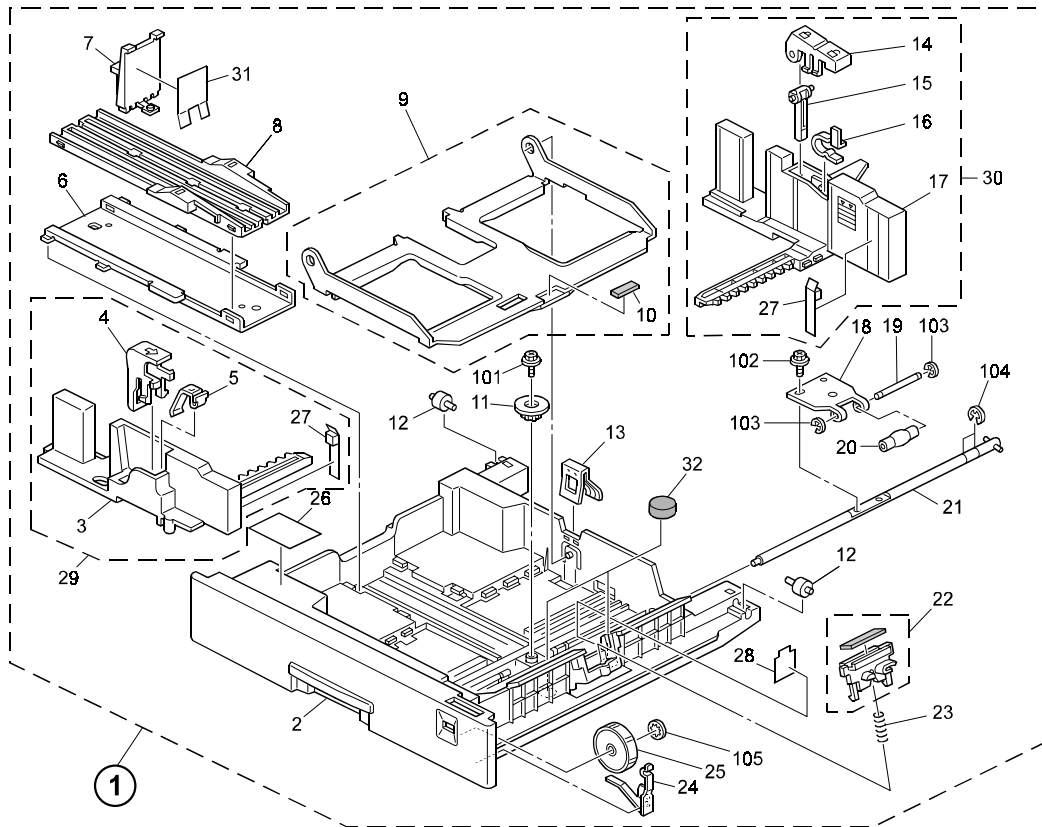
MODEL NAME	DESTINATION	CODE	SERIAL NO.
PS440	All RICOH subsidiaries, NRG, SAVIN	A860-11	H2700701819
PS440	Infotec	A860-21	4C40800001
PS440	Lanier	A860-56	L0640080001

Model: Stinger-C1 (PS410)/Russian-C1 (PS440)		Date: 19-Jul-02	No.: MA860014
Modified Article: Paper Tray Assembly		Prepared by: K. Miura	
From: Technical Services sec. Service Planning Dept.			
Reason for Modification:	<input type="checkbox"/> Parts catalog correction <input type="checkbox"/> To facilitate assembly <input type="checkbox"/> Part standardization	<input type="checkbox"/> Vendor change <input checked="" type="checkbox"/> To improve reliability <input type="checkbox"/> Other	<input type="checkbox"/> To meet standards (       )

The following has been changed to ensure that the Paper Tray can be inserted and pulled out more smoothly.

Old part number	New part number	Description	Q'ty	Int	Page	Index	Note
A8607341	A8607342	Paper Tray Assembly	1	O/O	5	1	

< Stinger-C >



< Russian-C1 >

